



28 Goldcrest Court, Wishaw, Lanarkshire ML2 0JE

**28 Goldcrest Court, Wishaw, Lanarkshire
ML2 0JE**

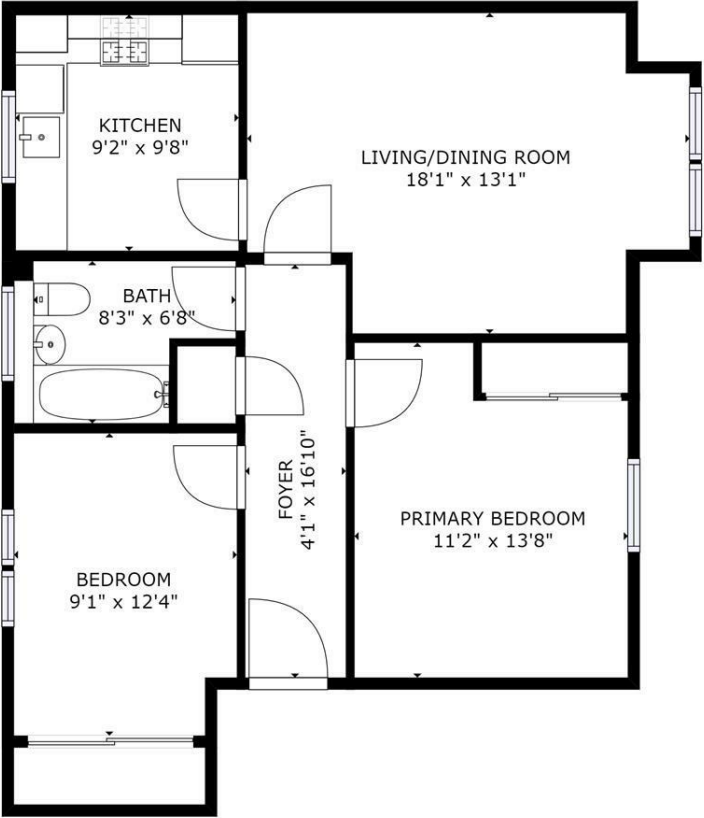
Top Floor Flat

2 Double Bedrooms

Excellent Storage







GROSS INTERNAL AREA
FLOOR 1: 739 sq. ft
TOTAL: 739 sq. ft
SIZES AND DIMENSIONS ARE APPROXIMATE, ACTUAL MAY VARY.

FLOOR 1



Energy Efficiency Rating		
	Current	Potential
Very energy efficient - lower running costs		
(92 plus) A		
(81-91) B		
(69-80) C		
(55-68) D		
(39-54) E		
(21-38) F		
(1-20) G		
Not energy efficient - higher running costs		
Scotland	EU Directive 2002/91/EC	

Environmental Impact (CO ₂) Rating		
	Current	Potential
Very environmentally friendly - lower CO ₂ emissions		
(02 plus) A		
(81-91) B		
(69-80) C		
(55-68) D		
(39-54) E		
(21-38) F		
(1-20) G		
Not environmentally friendly - higher CO ₂ emissions		
Scotland	EU Directive 2002/91/EC	